

## ImageSet Quick Start

This quick start guide covers the standard installation on Windows XP/2000 /2000 Pro/2000 Server. See the ImageSet User Guide (located on your CD) for additional detailed information.

Before you begin, please close all running applications. Have the printer driver loaded from the printer manufacturer, printer connected and able to print to the selected printer using the native driver.

### Loading PowerRIP ImageSet

1. Insert the CD into the computer, The splash screen will give you four choices. (If the splash screen does not appear, launch the "setup.exe" application on the root folder of the CD).



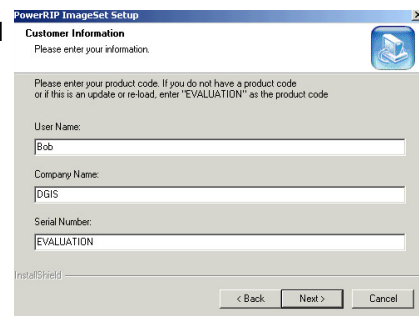
**Install/Remove/Repair.** This option installs the main program and all required files

**View Installation Guide.** Opens the installation instructions (this document). Requires Adobe Acrobat

**Connect workstation to PowerRIP ImageSet Server.** This option is used when connecting workstations to PowerRIP ImageSet remotely, as a client.

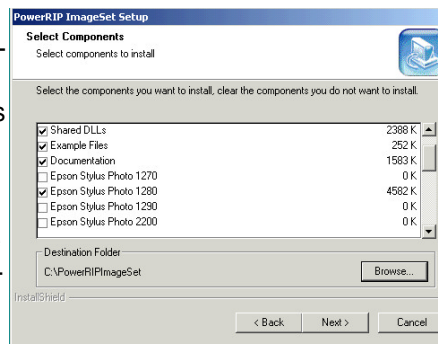
**EXIT.** Closes the installer application

1. Select Install  
2.The Install Shield Wizard will start, Click NEXT  
3.The License Agreement will be presented, review then click NEXT  
4.The Customer Information screen will include



User Name  
Company  
Serial Number  
(this is your 16 digit Product Code) Please fill in then click **NEXT**

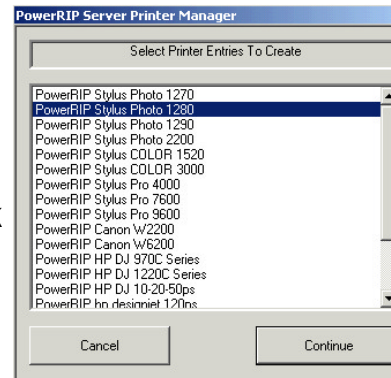
5.The Select Components will be next. Select your printer. If you wish to generate TIFF files and/or PDF files as well, select those output devices as well. You can also select more than 1 printer Insure a check mark is in the box next to the printer selected. When finished, click NEXT.



6.The select program folder will display You should leave as default. Click **NEXT**

7.The program will now be installed. Depending on the speed of your system, this may take a few minutes.

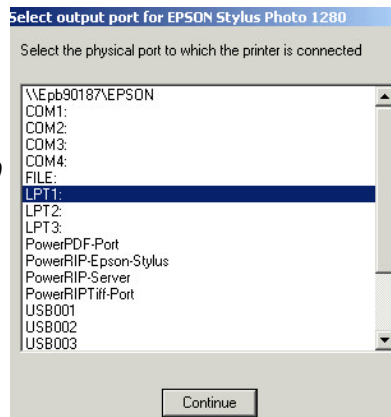
8. After the system installs the program, you will be asked to install the printer in the "Select printer Entries to create" screen Select your printer (or Printers) Then click **Continue**



9. A window will now tell you that the printer has installed. Click **OK**



10. You must now select the port that each connected printer is connected to. After you select the port, click **CONTINUE.** For faster print speeds with the Stylus 2200 or 2100 select the Epson Stylus Photo 2200 instead of a USB number.

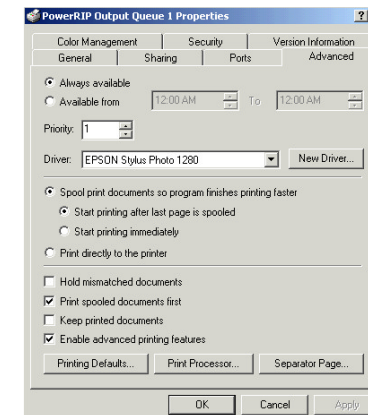
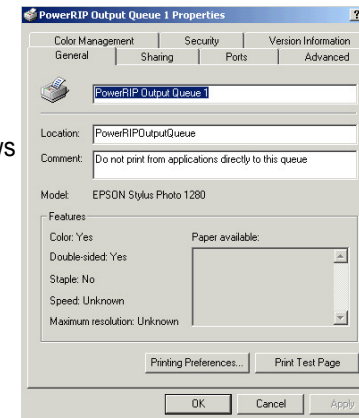


11.This will finish the installation, The final window will ask you to click **FINISHED** before rebooting the system remove the CD.

### Setting the Printer Driver

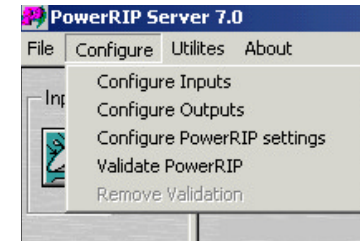
After the system restarts, go to the printer folder (Start > Settings > Printers on Windows 2000 or Start/Printers and Faxes on Windows XP)

1. Right Click on the PowerRIP Output Queue 1
2. Select **PROPERTIES**
3. Select the **ADVANCED** tab
4. In the driver window, use the down arrow (on the right side of the window)to select the Printer driver from the printer manufacture. Click **APPLY**, then **OK**



### Installing Validation

1. Start PowerRIP  
Go to START > Programs > PowerRIP ImageSET double click on PowerRIP ImageSET
2. In the upper left corner click on Configure tab
3. Select **Validate PowerRIP.**
- 4.The PowerRIP Server Validation window will display the User Code and provide a box to place the activation code. Jot down the USER CODE.



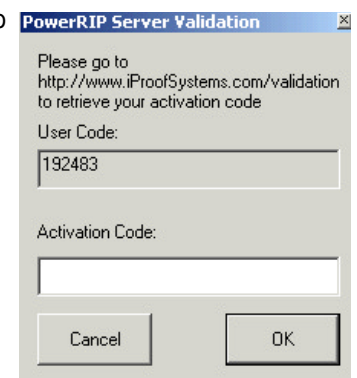
5. To obtain your activation code go to [www.iproofsystems.com](http://www.iproofsystems.com)

Click on the get activation tab. On the validation page select **ENGLISH** as your language.

Fill in the registration form, click **SUBMIT FORM**

Select the **IMAGESET** product, and **VALIDATE**

Type in your product code, and user code, click **SUBMIT.** You will be presented with a window with a activation code. Jot it down. and close the connection.



6. Go back to the PowerRIP Server Validation window (step5) insert the activation code in the activation window. Click **OK**

### Testing PowerRIP ImageSet

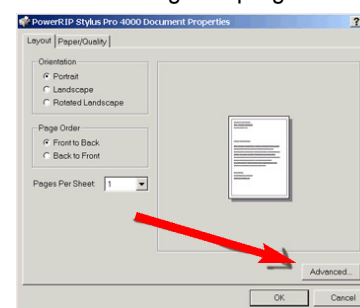
1. Start PowerRIP ImageSet  
Go to START > Programs > PowerRIP ImageSET double click on PowerRIP ImageSET
2. Go To FILE > PRINT POSTSCRIPT FILE.  
The open Dialog will display (you should be in the PowerRIPImageset folder) Highlight TRAIN.PS and click open.
- 3.The configure output window will display. Make sure the correct printer and port is selected. Click **OK.**  
The file will process and print.  
To print from applications, please refer to the user guide, on the CD

### Printing Using Halftone Screening

PowerRIP ImageSet supports multiple screening technologies. Halftone screening (The default in ImageSet for Silk Screening), Stochastic screening (The default in standard ImageSet), and Error diffusion (on selected models).The following sections on the back side of this Quick Start will give you a general overview for setting the printing options for screening, resolution, and media type of paper or film to generate halftone output for proofs or film.

## Where do I find the Printer settings?

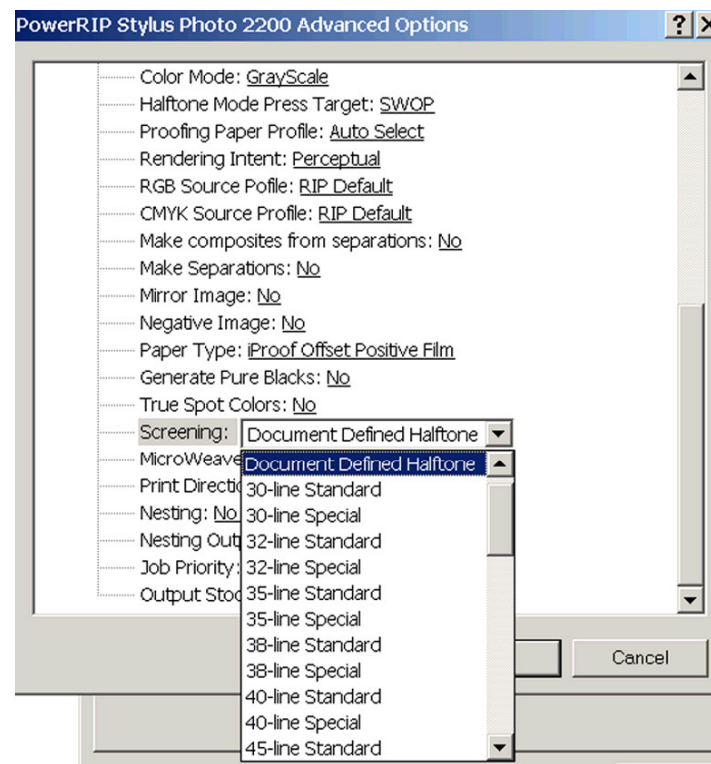
PowerRIP ImageSet provides the Windows PostScript driver a PPD (PostScript Printer Description). The Windows PostScript driver uses this PPD to set the features needed, when it receives print data from Corel, Illustrator, Quark or other applications and "creates" PostScript files to be processed and printed by the PowerRIP ImageSet program. Detailed explanations follow on



printer features and the chart at the far right shows four basic print settings you can use.

Choose **Print** go to **Properties** and then **Advanced**.

This Printer Features screen shot is setup for film positives.



## Graphics

Set **Print Quality (Resolution)** selection depends on the desired print quality. Select higher resolutions when printing finer screen rulings (90lpi up), for better halftone dot shape.

### Printer Features

Set **Color Mode** "Grayscale" for film seps sent from Corel, Illustrator, Quark, or use "CMYK" for color proofs or separations made in the RIP.

Set **Halftone Mode Press Target** used to separate RGB colors into CMYK when separations with halftones are made in the RIP.

Set **Proofing Paper Profile** chooses the ICC for your proofing paper. Auto Select lets PowerRIP pick the one iProof made automatically.

Set **Rendering Intent** Perceptual for RGB pictures, Absolute Colorimetric or Relative Colorimetric for accurate proofing.

Set **RGB Source** Defines the color space for incoming RGB data.

Set **CMYK source** Defines the color space for incoming CMYK data.

Set **Make Composite From Separation** (Yes or No) Used when recombining separations for a color proof.

Set **Make Separations In PowerRIP** (Yes or No). When printing from an application that does not support separations, you set the "Make Separations in PowerRIP" to "Yes." Separations will be CMYK.

Set **Mirrored** (Yes or No) Used for right reading or wrong reading emulsion up. Right reading for silk screen and wrong reading for offset.

Set **Negative** as desired (Yes or No). WARNING: Producing a negative separation on an inkjet printer is NOT recommended. Negatives use large amounts of ink.

Set **Paper Type** choose the output media you are using.

Set **Generate Pure Blacks** (Yes or No) Useful when proofing to avoid black type being made from multiple colors.

Set **True Spot Colors** (Yes or No) When Make Composite from Separation is used Special handling can be done to spot colors.

Set **Screening** choose Document Defined if the screen frequency and angle are determined by the application (Corel, Illustrator, Quark, etc.). Choose pre-defined screen rulings to override the application's halftone screen request or if printing from applications that do not support specifying halftones. Stochastic is also available.

Set **MicroWeave** (On or OFF) Leave On.

Set **Nesting** (Yes or No) Gangs page output on multi-page files.

Set **Nesting Output Media Size** Paper size to be nested on.

Set **Job Priority** Can be used to push urgent jobs through printing.

Set **Output Stock Simulation** defines the paper stock and color densities of the actual printing press being used to print a job.

## Settings for four basic print outs are on the chart to the right.

### 1. Printing Halftone Separations sent from applications to film

For printing silkscreen or offset film halftone separations to film, the resolution chosen depends on the desired print quality. Keep in mind, when using fine screen rulings (120lpi and up), a higher printer resolution will shape your halftone dots better. Densities of 3.8 to 4.0 can be achieved using the proper ink and film combinations.

### 2. Making Halftone Separations from RGB/CMYK composites

PowerRIP can separate RGB/CMYK composite data at the RIP and create CMYK separations. The RIP does not make spot color separations. Most users prefer to create separations in Corel, Quark, InDesign, Illustrator, or Freehand to gain spot color control.

### 3. Making a Color Composite Proof "directly from an application"

This is the most common color proof made. It is called a "CMYK composite" proof, or in Quark 6.5, for a RGB/CMYK composite, it is an "As Is" proof on output. "Direct composite proofs" are good for a quick color check, but do not show trapping and overprints in all file elements, which is done by the next type of proof.

### 4. Make a Color Halftone Composite Proof from Separations

You can make a color composite proof from separations sent from an application such as Corel, Quark, Illustrator, InDesign, or Freehand, by using the "Make Composite from Separations" feature. This is useful for viewing trapping, overprints, and moire, before making your screens or offset plates. This is the most accurate proof you can make. It can save you a lot of time and help prevent mistakes.

### Where to Get Help

Your PowerRIP ImageSet CD contains a user manual to help you print from popular applications, answer frequently asked questions, and identify PostScript and system errors you may encounter.

iProof Systems Support is available via phone, fax, mail, e-mail and the Internet. Telephone support hours are 9AM to 6PM EST (Monday to Friday). Telephone: 321-777-3982 Fax: 321-777-6025.

We suggest iProof's free e-mail support to get a prompt answer to questions you may have. You can e-mail iProof Systems at: Support@iproofsystems.com.

When calling or emailing for technical assistance please identify yourself, your computer platform, operating system, and printer model. Include a description of the problem you are encountering, so that a technical support representative can e-mail or respond to your question. Please include your product code or state you are using a demo. A technical support representative will respond to your question.

## Advanced Printer settings for typical Silk Screen and Offset work for items

	1	2	3	4
<b>Paper Output</b>	Pick a paper size to print on			
<b>Graphics Settings</b>				
Print Quality (High Resolution)	1440	1440	1440	1440
Print Quality (or Faster)	720	720	720	720
Image Color Management	All use ICM Method disabled			
ICM Intent	Does not matter since ICM disabled			
Scaling	All normally 100% or you choose			
True Type Font	All substitute with device font			
<b>Document Options</b>				
Advanced Printing Features	All use Enabled			
<b>PostScript Options</b>				
PostScript Output Option	All normally Optimized for Speed			
TrueType Download Option	All normally Automatic			
PostScript Language Level	All normally 3, All will also work at 2			
Send PostScript Error Handler	All normally Yes			
Mirrored Output	Always No here; use the one below			
<b>Printer Features Settings</b>				
Color Mode	Gray	CMYK	CMYK	Gray
Halftone Mode Press Target	SWOP	SWOP	SWOP	SWOP
Proofing Paper Profile	Auto	Auto	Auto	Auto
Rendering Intent	Default	Default	ABS	ABS
RGB Source	Default	Default	Default	Default
CMYK source	Default	Default	Default	Default
Composite From Separation	No	No	No	Yes
Make Separations In PowerRIP	No	Yes	No	No
Mirrored (Set for Silk Screen)	No	No	No	No
Mirrored (Set for Offset)	Yes	Yes	No	No
Negative	No	No	No	No
Paper Type	Film	Film	Paper	Paper
Generate Pure Blacks	No	No	Yes	Yes
True Spot Colors	No	No	No	Yes
Screening	Document Defined or Pre-Defined			
MicroWeave	On	On	On	On
Print direction	All unidirectional for better quality			
Nesting	Off	Off	Off	Off
Nesting Output Media Size	A3+B+	A3+B+	A3+B+	A3+B+
Job Priority	Normal	Normal	Normal	Normal
Output Stock Simulation	SWOP or Silk Screen for all four			